

FFA-A9 / RZAG-B *SkyAir* Alpha-series



# Fully Flat Cassette – Mini Sky Air

Discreet style meets innovative comfort and efficiency

The Daikin Fully Flat Cassette sets a new standard for commercial air conditioning, combining seamless, flush ceiling integration with whisper-quiet performance. Experience individual airflow control, optional fresh air intake and advanced energy-saving sensor options in a system specifically designed for modern offices and stylish interiors seeking comfort without compromise.

**Perfectly flush ceiling fit**

A discreet air conditioning unit to fit completely flat in a standard ceiling tile, projecting just 8mm.

**Sleek architectural design**

Enjoy clean, uninterrupted ceiling lines with European-inspired detailing, blending seamlessly with lighting, speakers and sprinklers for a coordinated, minimalist finish. Choose from white, striking white or silver panel options.

**Comfort that's felt, not heard**

Enjoy complete peace and quiet with sound levels as low as 25dBA. Indetectible operation for environments where distraction-free focus is essential.

**Substantial energy savings**

Specialised small tube heat exchanger, DC fan motor and high-efficiency drain pump cut energy consumption. Optional smart sensors further reduce

bills by up to 27%, responding to room usage and maintaining stable conditions.

**Tailored, flexible airflow**

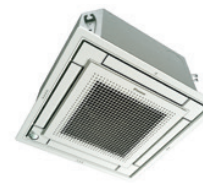
Individual louvre control means you can direct airflow to suit every room layout. Optional branch duct and fresh air intake guarantee comfort, even in larger or asymmetrical spaces.

**Simplified installation**

An integrated 675mm lift drain pump and up to 50m pipe runs speed up installations and enable flexible unit placement even in complex projects.

**Effortless connectivity**

Connect to your building management system with DIII-Net with ease, and unlock control from anywhere with optional Wi-Fi via the Daikin Onecta app.



FFA-A9 (White)



FFA-A9 (Silver)



RZAG-B

50m PIPE RUN



BRC7F530S/W (optional)



WI-FI ADAPTOR AVAILABLE AS AN OPTION



Indoor Units			FFA35A9	FFA50A9	FFA60A9
Capacity	UK Total Cooling	kW	3.42	4.89	5.86
	UK Sensible Cooling	kW	2.38	3.35	4.01
	Nominal Cooling	kW	3.5	5.0	6.0
	Nominal Heating	kW	4.0	5.8	7.0
Seasonal Efficiency (EN14825) COOLING	Energy Label		A++	A++	A+
	Pdesign	kW	3.5	5.0	6.0
	SEER		6.40	6.30	5.80
Seasonal Efficiency (EN14825) HEATING	Energy Label		A	A+	A+
	Pdesign	kW	4.20	4.30	4.50
	SCOP		3.80	4.01	4.04
Air Flow Rate (Cooling)	High / Med / Low	m <sup>3</sup> /min	10.0 / 8.5 / 6.5	12.7 / 10.9 / 8.6	14.5 / 12.5 / 9.5
Dimensions (with Decoration Panel)	Height	mm	260 (306)	260 (306)	260 (306)
	Width	mm	575 (620)	575 (620)	575 (620)
	Depth	mm	575 (620)	575 (620)	575 (620)
Weight (with Decoration Panel)		kg	16 (18.8)	17.5 (20.3)	17.5 (20.3)
Sound Pressure (Cooling)	High / Med / Low	dBA	34 / 30.5 / 25	39 / 34 / 27	43 / 40 / 32
Sound Pressure (Heating)	High / Med / Low	dBA	34 / 30.5 / 25	39 / 34 / 27	43 / 40 / 32
Sound Power (Cooling)		dBA	51	56	60

Outdoor Units			RZAG35B	RZAG50B	RZAG60B
Dimensions	Height x Width x Depth	mm	734 x 870 x 373	734 x 870 x 373	734 x 870 x 373
Weight		kg	52	52	52
Electrical Details	Power Supply		1ph	1ph	1ph
	Maximum Input Current (MCA) A		13.42	13.47	15.39
	Max Fuse Size	A	16	16	20
Interconnection Wiring	Core / Cable Size		3+E / 1.5	3+E / 1.5	3+E / 1.5
Piping Connections	Liquid / Gas	inches (mm)	1/4 (6.4) / 3/8 (9.5)	1/4 (6.4) / 1/2 (12.7)	1/4 (6.4) / 1/2 (12.7)
Pipework	Maximum Length	m	50	50	50
	Maximum Vertical Rise	m	30	30	30
	Precharged to	m	30	30	30
	Additional charge	g/m	20	20	20
	Holding charge	kg	1.55	1.55	1.55
Sound Pressure (Cooling)	Nominal	dBA	48	49	50
Sound Pressure (Heating)	Nominal	dBA	48	49	50
Sound Power (Cooling)		dBA	62	63	64
Operating Range (Cooling)	Min / Max	°CDB	-20 / 52	-20 / 52	-20 / 52
Operating Range (Heating)	Min / Max	°CWB	-21 / 18	-21 / 18	-21 / 18
Air Flow Rate (Cooling)	Nominal	m <sup>3</sup> /min	55.1	55.1	55.1

### Accessories:

Accessory Ref	Description
BYFQ60CW	Fully Flat Cassette Decoration Panel - White
BYFQ60B3	Fully Flat Cassette Decoration Panel - Old style (FFQ-B9V looks)
BYFQ60CS	Fully Flat Cassette Decoration Panel - Silver
BRP069C81	Wi-Fi adapter for use with Daikin ONECTA App
BRC1H52W7	Wired touch screen remote controller - White
BRC1H52S7	Wired touch screen remote controller - Silver
BRC1H52K7	Wired touch screen remote controller - Black
BRC7EB530W	Wireless remote for fully flat cassette Old Style decoration panel
BRC7F530S	Wireless remote controller for Silver ceiling decoration panel
BRC7F530W	Wireless remote controller for White ceiling decoration panel
BRYQ60AS	Integral PIR sensor for fully flat cassette Silver decoration panel. Enables energy saving functions
BRYQ60AW	Integral PIR sensor for fully flat cassette White decoration panel. Enables energy saving functions
RTD-10 and UK.FB2	Enhanced function PCB for Sky Air and VRV. Duty rotation, Lead Lag control and heating interlock

Accessory Ref	Description
RTD-20 and UK.FB2	Energy control PCB for Sky Air and VRV
EKM8PPI and UK.FB2	Modbus interface PCB for Sky Air and VRV
K.RSS	Wireless room mounted temperature sensor and receiver
KLIC-DL_V2	KNX Interface for Sky Air and VRV systems
KRCS01-4	Remote room mounted temperature sensor
KRP1B57 and UK.FB2	Adaptor PCB for Interlock to fresh air fan
KRP4A53 and UK.FB2	Unit/group adaptor PCB for remote on/off, status indication and temperature setting
BDBHQ44C60	Sealing member for decoration panel FFA,FXZQ
K.CGM	Condensing Unit Guard (1150 x 1150 x 650)
K.CWB90-2	Wall bracket (90kg, 500mm support arm)
K.DT1	Condensate drip tray for use with K.CWB90-2
K.FF6005	Two flexi-feet (Standard 600mm x 185mm x 100mm) to mount the outdoor unit
RS-SE	Service and configuration tool for K.RSS

The present leaflet is drawn up by way of information only and does not constitute an offer binding upon Daikin UK. Daikin UK has compiled the content of this leaflet to the best of its knowledge. No express or implied warranty is given for the completeness, accuracy, reliability or fitness for particular purpose of its content and the products and services presented therein. Specifications are subject to change without prior notice. Daikin UK explicitly rejects any liability for any direct or indirect damage, in the broadest sense, arising from or related to the use and/or interpretation of this leaflet. All content is copyrighted by Daikin UK.



Daikin Europe N.V. participates in the Eurovent Certification programme for Air conditioners (AC), Liquid Chilling Packages (LCP), Air handling units (AHU) and Fan coil units (FCU), Check ongoing validity of certificate online: [www.eurovent-certification.com](http://www.eurovent-certification.com) or using: [www.certiflash.com](http://www.certiflash.com)