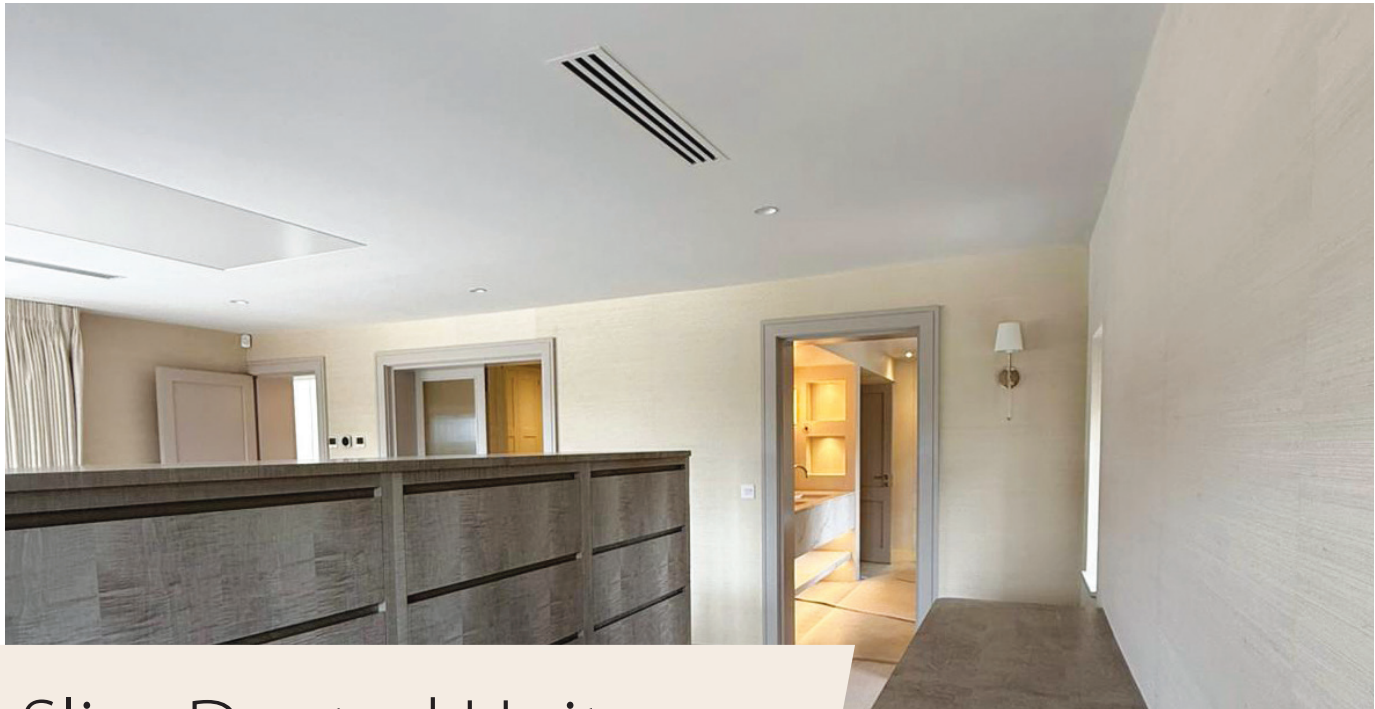


FDXM-F9 / RXM



Slim Ducted Unit – Perfera Condenser

Powerful performance in a discreet,
flexible design

The ultra-slim ducted solution that delivers discreet, premium comfort for modern residential and light commercial spaces in a compact form. Maximised efficiency and intuitive control work together to provide year-round comfort, housed in a system that blends invisibly into ceilings. Ideal for apartments, hotel rooms and small offices where space is limited.

Compact, concealed and quiet

With a depth of just 620mm, this unit is designed for spaces where every millimetre counts. It delivers whisper-quiet operation and features a Night/Silent Mode with three condenser sound levels, ideal for bedrooms, hotels and urban environments.

Efficient performance, every day

The Daikin Inverter Compressor adjusts power use precisely to room requirements, reducing energy consumption while maintaining comfort. Economy Mode lowers energy use by up to 30%, while the optional Self-Cleaning Filter helps preserve peak performance.

Smart energy management

With Home Leave Operation, set “away” periods during unoccupied times to prevent unnecessary energy use. The system maintains a minimal operating temperature to reduce workload and restore comfort faster when you return.

Reliable airflow and distribution

An external static pressure of up to 40Pa ensures suitability for flexible ductwork runs and maintains consistent temperature control across multiple small zones, supporting evenly distributed airflow throughout open or partitioned spaces.

Flexible installation and configuration

This ultra-slim system requires only 240mm of ceiling void, allowing installation in tight alcoves and hotel rooms. It’s also compatible with Airzone multi-zoning kits (optional) for individual climate control across separate areas, ideal for guest rooms or office zones.

Simple integration and control

A built-in Auto Restart function restores the previous mode automatically after power interruptions, ensuring uninterrupted comfort. Optional Wi-Fi connectivity via the Daikin Onecta App allows users to control the system remotely for full convenience.



FDXM-F9



BRC4C65
(optional)



RXM60A



Madoka
BRC1H52W7

WI-FI ADAPTOR
AVAILABLE AS AN OPTION



FDXM-F9 / RXM

R-32 BLUEEVOLUTION

| Indoor Units | | | FDXM25F9 | FDXM35F9 | FDXM50F9 | FDXM60F9 |
|---------------------------------------|---------------------------|---------------------|-----------------|-----------------|--------------------|--------------------|
| Capacity | UK Total Cooling | kW | 2.35 | 3.32 | 4.89 | 5.86 |
| | UK Sensible Cooling | kW | 1.81 | 2.26 | 3.33 | 4.11 |
| | Nominal Cooling | kW | 2.4 | 3.4 | 5.0 | 6.0 |
| | Nominal Heating | kW | 3.2 | 4.0 | 5.8 | 7.0 |
| Seasonal Efficiency (EN14825) COOLING | Energy Label | | A+ | A | A+ | A |
| | Pdesign | kW | 2.4 | 3.4 | 5.0 | 6.0 |
| | SEER | | 5.68 | 5.26 | 5.7 | 5.56 |
| | Annual Energy Consumption | kWh | 148 | 226 | 307 | 378 |
| Seasonal Efficiency (EN14825) HEATING | Energy Label | | A+ | A | A | A |
| | Pdesign | kW | 2.6 | 2.9 | 4.0 | 4.6 |
| | SCOP | | 4.24 | 3.88 | 3.89 | 3.80 |
| | Annual Energy Consumption | kWh | 858 | 1046 | 1440 | 1693 |
| Air Flow Rate (Cooling) | High / Med / Low | m ³ /min | 8.7 / 8.0 / 7.3 | 8.7 / 8.0 / 7.3 | 15.8 / 14.6 / 13.3 | 16.0 / 14.8 / 13.5 |
| External Static Pressure | Nominal | Pa | 30 | 30 | 40 | 40 |
| Dimensions | Height | mm | 200 | 200 | 200 | 200 |
| | Width | mm | 750 | 750 | 1150 | 1150 |
| | Depth | mm | 620 | 620 | 620 | 620 |
| Weight | | kg | 21 | 21 | 28 | 28 |
| Sound Pressure (Cooling) | High / Med / Low | dBA | 35 / 33 / 27 | 35 / 33 / 27 | 38 / 35 / 30 | 38 / 35 / 30 |
| Sound Pressure (Heating) | High / Med / Low | dBA | 35 / 33 / 27 | 35 / 33 / 27 | 38 / 35 / 30 | 38 / 35 / 30 |
| Sound Power (Cooling) | | dBA | 53 | 53 | 55 | 56 |

| Outdoor Units | | | RXM25A9 | RXM35A9 | RXM50A8 | RXM60A |
|---------------------------|-----------------------------|---------------------|-----------------------|-----------------------|------------------------|------------------------|
| Dimensions | Height x Width x Depth | mm | 610 x 923 x 367 | 610 x 923 x 367 | 610 x 923 x 367 | 734 x 954 x 401 |
| Weight | | kg | 36 | 36 | 40 | 49 |
| Electrical Details | Power Supply | | 1ph | 1ph | 1ph | 1ph |
| | Maximum Input Current (MCA) | A | 10.92 | 10.92 | 12.69 | 14.76 |
| | Max Fuse Size | A | 13 | 13 | 13 | 16 |
| Interconnection Wiring | Core / Cable Size | | 3+E / 1.5 | 3+E / 1.5 | 3+E / 1.5 | 3+E / 1.5 |
| Piping Connections | Liquid / Gas | inches (mm) | 1/4 (6.4) / 3/8 (9.5) | 1/4 (6.4) / 3/8 (9.5) | 1/4 (6.4) / 1/2 (12.7) | 1/4 (6.4) / 1/2 (12.7) |
| Pipework | Maximum Length | m | 20 | 20 | 30 | 30 |
| | Maximum Vertical Rise | m | 15 | 15 | 20 | 20 |
| | Precharged to | m | 10 | 10 | 10 | 10 |
| | Additional charge | g/m | 20 | 20 | 20 | 20 |
| | Holding charge | kg | 0.95 | 0.95 | 0.95 | 1.15 |
| Sound Pressure (Cooling) | Nominal | dBA | 47 | 47 | 48 | 48 |
| Sound Pressure (Heating) | Nominal | dBA | 49 | 49 | 49 | 49 |
| Sound Power (Cooling) | | dBA | 58 | 58 | 61 | 63 |
| Operating Range (Cooling) | Min / Max | °CDB | -10 / 50 | -10 / 50 | -10 / 50 | -10 / 50 |
| Operating Range (Heating) | Min / Max | °CWB | -21 / 18 | -21 / 18 | -21 / 18 | -21 / 18 |
| Air Flow Rate (Cooling) | Nominal | m ³ /min | 39.1 | 39.1 | 58.0 | 46.6 |

Notes & Features:

- > All fan coils supplied as standard with air filter
- > New chassis with height of 245mm makes the FBA-A one of the slimmest medium static units on the market

Accessories:

| Accessory Ref | Description |
|--------------------|--|
| BRC1H52W7 | Wired touch screen remote controller - White |
| BRC1H52S7 | Wired touch screen remote controller - Silver |
| BRC1H52K7 | Wired touch screen remote controller - Black |
| BRP069C81 | Wi-Fi adapter for use with Daikin ONECTA App |
| BRC4C65 | Wireless remote controller |
| KLIC-DL_V2 | KNX Interface for Sky Air and VRV systems |
| KRCS01-4 | Remote room mounted temperature sensor |
| KRP4A53 and UK.FB2 | Unit/group adaptor PCB for remote on/off, status indication and temperature setting |
| RTD-10 and UK.FB2 | Enhanced function PCB for Sky Air and VRV. Duty rotation, Lead Lag control and heating interlock |
| RTD-20 and UK.FB2 | Energy control PCB for Sky Air and VRV |

| Accessory Ref | Description |
|---------------------|---|
| EKMPPP1A and UK.FB2 | Modbus interface PCB for Sky Air and VRV |
| K.CG5 | Condensing unit guard (750 x 1050 x 460) |
| K.CG6 | Condensing unit guard (1150 x 1150 x 650) |
| K.CWB90-2 | Wall bracket (90kg, 500mm support arm) |
| K.DT1 | Condensate drip tray for use with K.CWB90-2 |
| K.FF6005 | Two flexi-feet (Standard 600mm x 185mm x 100mm) to mount the outdoor unit |
| K.RSS | Wireless room mounted temperature sensor and receiver |
| UK.RAC5 | Return Air Plenum for FDXM25/35F9 |
| UK.RAC7 | Return Air Plenum for FDXM50F9 and FDXM60F9 |
| UK.SAF5 | Supply Air Plenum for FDXM25/35F9 |
| UK.SAF7 | Supply Air Plenum for FDXM50F9 and FDXM60F9 |
| RS-SE | Service and configuration tool for K.RSS |

The present leaflet is drawn up by way of information only and does not constitute an offer binding upon Daikin UK. Daikin UK has compiled the content of this leaflet to the best of its knowledge. No express or implied warranty is given for the completeness, accuracy, reliability or fitness for particular purpose of its content and the products and services presented therein. Specifications are subject to change without prior notice. Daikin UK explicitly rejects any liability for any direct or indirect damage, in the broadest sense, arising from or related to the use and/or interpretation of this leaflet. All content is copyrighted by Daikin UK.



Daikin Europe N.V. participates in the Eurovent Certification programme for Air conditioners (AC), Liquid Chilling Packages (LCP), Air handling units (AHU) and Fan coil units (FCU). Check ongoing validity of certificate online: www.eurovent-certification.com or using: www.certiflash.com