

FFA-A9 / RXM-A



Fully Flat Cassette – Standard Inverter

Refined comfort and style for compact commercial and residential spaces

Blending iconic European design with advanced engineering, the Daikin Fully Flat cassette fits perfectly flush in standard ceiling tiles and provides draught-free, energy-saving temperature control. Enjoy flexible airflow, optional fresh air intake and effortless connectivity, all in a unit that's as quiet as it is versatile.

Flat-fit ceiling integration

Unique on the market, it sits just 8mm below the ceiling line for a clean, minimalist look, blending seamlessly with lights, speakers and sprinklers. Choose from elegant white or a modern silver/white panel finish.

Compact, versatile outdoor

Split-type outdoor unit with flexible pipe runs, perfect for limited spaces typical of small shops, homes or split-level offices.

Quietest in class

Delivers whisper-quiet operation from just 25dBA, ensuring consistent comfort that never interrupts work, meetings or relaxation. So subtle you might forget it's there at all.

Energy-saving intelligence

Reduced energy consumption due to specially developed small tube heat exchanger, DC fan motor and drain pump. Optional presence

and floor sensors detect room use and temperature variation cutting energy costs by up to 27% and ensuring draught-free comfort.

Flexible air distribution

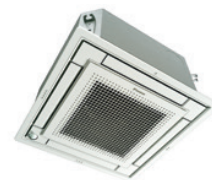
Individual louvre control lets you direct airflow to suit any room layout without relocating the unit. Optional fresh air intake and branch duct supply comfort to adjacent or awkwardly shaped rooms.

Versatile installation

Standard drain pump (up to 675mm lift) and branch duct options support flexible placement and effective air distribution.

Intuitive control

Link your unit directly into the wider building management system. Access full operation and settings via optional Wi-Fi and the Daikin Onecta app.



FFA-A9 (White)



FFA-A9 (Silver)



BRC7F530S/W (optional)



RXM60A



WI-FI ADAPTOR AVAILABLE AS AN OPTION



FFA-A9 / RXM-A

R-32 BLUEEVOLUTION

Indoor Units			FFA25A9	FFA35A9	FFA50A9	FFA60A9
Capacity	UK Total Cooling	kW	2.44	3.32	4.89	5.57
	UK Sensible Cooling	kW	1.81	2.28	3.27	3.86
	Nominal Cooling	kW	2.5	3.4	5.0	5.7
	Nominal Heating	kW	3.2	4.2	5.8	7.0
Seasonal Efficiency (EN14825) COOLING	Energy Label		A++	A++	A+	A+
	Pdesign	kW	2.5	3.4	5.0	5.7
	SEER		6.17	6.38	5.9	5.76
	Annual Energy Consumption	kWh	142	186	297	347
Seasonal Efficiency (EN14825) HEATING	Energy Label		A+	A+	A	A+
	Pdesign	kW	2.31	3.10	3.84	3.96
	SCOP		4.24	4.10	3.86	4.04
	Annual Energy Consumption	kWh	762	1058	1393	1372
Air Flow Rate (Cooling)	High / Med / Low	m ³ /min	9.0 / 8.0 / 6.5	10.0 / 8.5 / 6.5	12.7 / 10.9 / 8.6	14.5 / 12.5 / 9.5
Dimensions (with Decoration Panel)	Height	mm	260 (306)	260 (306)	260 (306)	260 (306)
	Width	mm	575 (620)	575 (620)	575 (620)	575 (620)
	Depth	mm	575 (620)	575 (620)	575 (620)	575 (620)
Weight (with Decoration Panel)		kg	16 (18.8)	16 (18.8)	17.5 (20.3)	17.5 (20.3)
Sound Pressure (Cooling)	High / Med / Low	dBA	31 / 28.5 / 25	34 / 30.5 / 25	39 / 34 / 27	43 / 40 / 32
Sound Pressure (Heating)	High / Med / Low	dBA	31 / 28.5 / 25	34 / 30.5 / 25	39 / 34 / 27	43 / 40 / 32
Sound Power (Cooling)		dBA	48	51	56	60

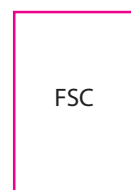
Outdoor Units			RXM25A9	RXM35A9	RXM50A8	RXM60A
Dimensions	Height x Width x Depth	mm	610 x 923 x 367	610 x 923 x 367	610 x 923 x 367	734 x 954 x 401
Weight		kg	36	36	40	49
Electrical Details	Power Supply		1ph	1ph	1ph	1ph
	Maximum Input Current (MCA)	A	10.92	10.92	12.69	14.76
	Max Fuse Size	A	13	13	13	16
Interconnection Wiring	Core / Cable Size		3+E / 1.5	3+E / 1.5	3+E / 1.5	3+E / 1.5
Piping Connections	Liquid / Gas	inches (mm)	1/4 (6.4) / 3/8 (9.5)	1/4 (6.4) / 3/8 (9.5)	1/4 (6.4) / 1/2 (12.7)	1/4 (6.4) / 1/2 (12.7)
Pipework	Maximum Length	m	20	20	30	30
	Maximum Vertical Rise	m	15	15	20	20
	Precharged to	m	10	10	10	10
	Additional charge	g/m	20	20	20	20
	Holding charge	kg	0.95	0.95	0.95	1.15
Sound Pressure (Cooling)	Nominal	dBA	47	47	48	48
Sound Pressure (Heating)	Nominal	dBA	49	49	49	49
Sound Power (Cooling)		dBA	58	58	61	63
Operating Range (Cooling)	Min / Max	°CDB	-10 / 50	-10 / 50	-10 / 50	-10 / 50
Operating Range (Heating)	Min / Max	°CWB	-21 / 18	-21 / 18	-21 / 18	-21 / 18
Air Flow Rate (Cooling)	Nominal	m ³ /min	39.1	39.1	58.0	46.6

Accessories:

Accessory Ref	Description
BYFQ60CW	Fully Flat Cassette Decoration Panel - White
BYFQ60B3	Fully Flat Cassette Decoration Panel - Old style (FFQ-B9V looks)
BYFQ60CS	Fully Flat Cassette Decoration Panel - Silver
BRP069C81	Wi-Fi adapter for use with Daikin ONECTA App
BRC1H52W7	Wired touch screen remote controller - White
BRC1H52S7	Wired touch screen remote controller - Silver
BRC1H52K7	Wired touch screen remote controller - Black
BRC7EB530W	Wireless remote for fully flat cassette Old Style decoration panel
BRC7F530S	Wireless remote controller for Silver ceiling decoration panel
BRC7F530W	Wireless remote controller for White ceiling decoration panel
BRYQ60AS	Integral PIR sensor for fully flat cassette Silver decoration panel. Enables energy saving functions
BRYQ60AW	Integral PIR sensor for fully flat cassette White decoration panel. Enables energy saving functions
RTD-10 and UK.FB2	Enhanced function PCB for Sky Air and VRV. Duty rotation, Lead Lag control and heating interlock

Accessory Ref	Description
RTD-20 and UK.FB2	Energy control PCB for Sky Air and VRV
EKMBPP1 and UK.FB2	Modbus interface PCB for Sky Air and VRV
K.RSS	Wireless room mounted temperature sensor and receiver
KLIC-DI_V2	KNX Interface for Sky Air and VRV systems
KRCS01-4	Remote room mounted temperature sensor
KRP1B57 and UK.FB2	Adaptor PCB for Interlock to fresh air fan
KRP4A53 and UK.FB2	Unit/group adaptor PCB for remote on/off, status indication and temperature setting
BDBHQ44C60	Sealing member for decoration panel FFA,FXZQ
K.CGM	Condensing Unit Guard (1150 x 1150 x 650)
K.CWB90-2	Wall bracket (90kg, 500mm support arm)
K.DT1	Condensate drip tray for use with K.CWB90-2
K.FF600S	Two flexi-feet (Standard 600mm x 185mm x 100mm) to mount the outdoor unit
RS-SE	Service and configuration tool for K.RSS

The present leaflet is drawn up by way of information only and does not constitute an offer binding upon Daikin UK. Daikin UK has compiled the content of this leaflet to the best of its knowledge. No express or implied warranty is given for the completeness, accuracy, reliability or fitness for particular purpose of its content and the products and services presented therein. Specifications are subject to change without prior notice. Daikin UK explicitly rejects any liability for any direct or indirect damage, in the broadest sense, arising from or related to the use and/or interpretation of this leaflet. All content is copyrighted by Daikin UK.



Daikin Europe N.V. participates in the Eurovent Certification programme for Air conditioners (AC), Liquid Chilling Packages (LCP), Air handling units (AHU) and Fan coil units (FCU), Check ongoing validity of certificate online: www.eurovent-certification.com or using: www.certiflash.com